



A spacious three bedroom, semi-detached, dormer style bungalow, situated within this highly sought after area of High Barnes. Internally the well-appointed and generously proportioned accommodation on the ground floor includes a reception hall, a spacious lounge with a bay window to the front, opening through to a dining room and there is kitchen, fitted with a range of contemporary units. Completing the ground floor is a double bedroom, a modern bathroom/wc and a useful utility. On the first floor there are two further bedrooms. Externally there is a delightful garden to the front with a driveway and to the rear a garden with a lawn. This conveniently located home is close to local amenities, shops and schools as well as providing easy access to Sunderland City Centre, Doxford International Park, Sunderland Royal Hospital and major road connections including the A19. With no upper chain involved, we highly advise arranging an early viewing.

MAIN ROOMS AND DIMENSIONS

Ground Floor

Access via double glazed entrance door.

Entrance Porch

Door to hallway.

Reception Hall



Radiator with radiator cover x2, and stairs to the first floor.

Bedroom 1 12'7" x 10'0"



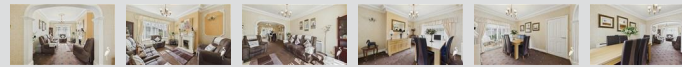
Double glazed bay window to the front, radiator with radiator cover, fitted wardrobes and overhead cupboards.

Bathroom



Low level WC with concealed cistern, washbasin and bath with shower attachment, UPVC lined walls and ceiling, ladder style heated towel rail and double glazed frosted window .

Lounge/Dining Room 12'0" x 13'5" plus 12'3" x 13'6"



Double glazed bay window to the front and double glazed sliding doors to the rear looking into the conservatory, feature electric fire with marble insert and hearth, 2x radiator with radiator cover and an archway through to the dining room.

Conservatory 9'10" x 9'0"



Double glazed windows surrounding and double glazed French patio door to the rear garden.

Kitchen 11'1" x 9'11"



Fitted with modern wall and base units with work surface over incorporating 1 1/2 bowl sink and drainer unit mixer tap. Integrated fridge freezer, Space for oven and hob, wall mounted Baxi boiler concealed by matching kitchen cupboard. Double glazed window to the rear.

Visit www.peterheron.co.uk or call 0191 510 3323

Tried. Trusted. Recommended. City Branch 20 Fawcett Street Sunderland SR1 1RH Fulwell Branch 15 Sea Road Fulwell Sunderland SR6 9BS

MAIN ROOMS AND DIMENSIONS

Utility 4'5" x 12'4"



2x double glazed Velux windows, cupboards and space for washing machine, 2x doors to outside.

First Floor Landing

Bedroom 2 10'5" x 18'9"



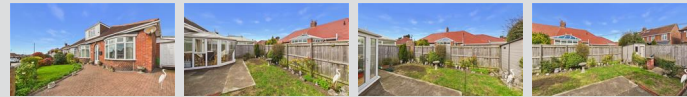
Double glazed window to the front, double glazed Velux window and radiators x2 with radiator covers.

Bedroom 3 10'2" x 8'9"



2x Velux windows and radiator.

Outside



Beautiful mature rear garden laid manly to lawn with established plants and paved areas, there is a shed and access down the side with a door for access to the utility. To the front is a driveway and a lawned garden area with established plants.

Council Tax Band

The Council Tax Band is Band C.

Tenure Freehold

We are advised by the Vendors that the property is Freehold. Any prospective purchaser should clarify this with their Solicitor.

Rent Charge

We have been advised by our client there is a rent charge payable annually of £4.50 to High Barnes Estate.

Important Notice - Particulars

Peter Heron Ltd for themselves and for the vendors of this property whose agents they are, give notice that:- The particulars are set out for general guidance only for the intending Purchasers and do not constitute part of an offer or contract. Whilst we endeavour to make our sales particulars accurate and reliable, if there is anything of particular importance which you feel may influence your decision to purchase, please contact the office and we will be pleased to check the information. Do so particularly, if contemplating travelling some distance to view the property. All descriptions, dimensions, references to conditions and necessary permissions for use and occupation and other details are given in good faith, and are believed to be correct, however any intending purchasers should not rely on them that statements are representations of fact, but must satisfy themselves by inspection or otherwise as to the correctness of each of them. Independent property size verification is recommended.

Lease details, service charges and ground rent (where applicable) are given as a guide only and should be checked and confirmed by your Solicitor prior to exchange of contracts. No person in the employment of Peter Heron Ltd has any authority to make or give any representation or warranty whatever in relation to this property or these particulars, nor to enter into any contract on behalf of Peter Heron Ltd, nor into any contract on behalf of the Vendor. The copyright of all details and photographs remain exclusive to Peter Heron Ltd.

Please note that in the event the purchaser uses the services of Peter Heron Conveyancing in the purchase of their home, Peter Heron Ltd will be paid a completion commission of £300.00 by Movewithus Ltd.

Fawcett Street Viewings

To arrange an appointment to view this property please contact our Fawcett Street branch on 0191 510 3323 or book viewing online at peterheron.co.uk

Visit www.peterheron.co.uk or call 0191 510 3323

Tried. Trusted. Recommended. City Branch 20 Fawcett Street Sunderland SR1 1RH Fulwell Branch 15 Sea Road Fulwell Sunderland SR6 9BS

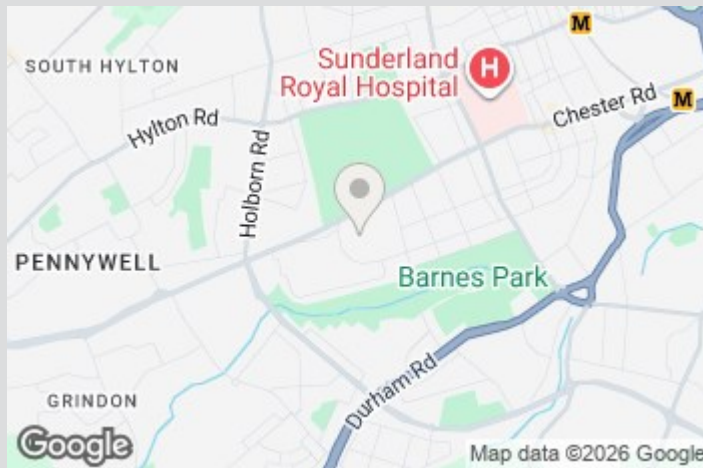
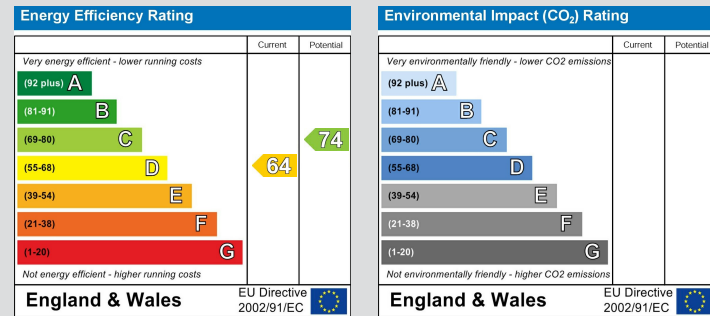
MAIN ROOMS AND DIMENSIONS

Opening Times

Monday to Friday 9.00am - 5.00pm Saturday 9.00am - 12noon

Ombudsman

Peter Heron Estate Agents are members of The Property Ombudsman and subscribe to The Property Ombudsman Code of Practice.



Visit www.peterheron.co.uk or call **0191 510 3323**

Tried. Trusted. Recommended. City Branch 20 Fawcett Street Sunderland SR1 1RH Fulwell Branch 15 Sea Road Fulwell Sunderland SR6 9BS



Ground Floor



First Floor



Approximate total area⁽¹⁾

119.3 m²

1285 ft²

Reduced headroom

9.5 m²

102 ft²

(1) Excluding balconies and terraces

Reduced headroom

..... Below 1.5 m/5 ft

Calculations reference the RICS IPMS 3C standard. Measurements are approximate and not to scale. This floor plan is intended for illustration only.

GIRAFFE360